



Sandoval County Master Gardener Newsletter

<http://sandovalmastergardeners.org/>



New Mexico State University • Cooperative Extension Service • U.S. Department of Agriculture

Steve M. Lucero,
County Program Director

Lynda Garvin
Agriculture/Horticulture
Agent

Sandoval County
Extension
PO Box 400
Bernalillo, NM 87004

Physical Address:
1500 Idalia Rd, Bldg B
Administraton
Room 1049
Bernalillo NM 87004

Ph: 505-867-2582
Email: Sandoval@NMSU.edu

NMSU and the U.S.
Department of
Agriculture cooperating.

SCMG Newsletter
Submissions
Deadline: 21st each mo.

Please submit news,
articles, events and
photographs to:
scmgnews@gmail.com

Editor:
Kate Shadock

MARCH 2019

President's Corner

The recent snows were a blessing for the trees in my yard as they got some extra water beside their monthly winter drink.

At long last I can announce that the SCMG Hotline now has a phone number **505-358-1943**. It is in the office on Idalia. We are now ready to take gardeners calls.

On February the 14 Intern class members and 6 veterans toured the Santa Ann Greenhouses and helped plant seeds and transplant seedlings, followed by a box lunch.

Two new classes are coming at Meadowlark Senior Center: Gardening with the Master's series on March 12th from 7 to 8:30 pm about **Plant Propagation**. On March 28th **Everything You Wanted to Know About Planning a Successful Vegetable Garden in Sandoval County** from 1:30 to 3:30 pm. These are very helpful classes and a great way to log your education hours.

Remember the board meetings on the 3rd Tuesday, from 10 to 12 are always open to everyone.

March will be a busy month with 4 Intern classes and the first Community Outreach program at the **Annual Tree Seedling Giveaway**, Saturday, March 30th at Loma Colorado Library from 11 am to 1 pm.

Hope everyone has planted extra plants for our **Annual Plant Sale**. We also will be selling Row Cover during the Plant Sale. This is a great opportunity to buy some if you need it. Row covers protect your tomatoes from the Hawk Moth and their Tomato Horn Worm caterpillars!

~ Julia

Lynda's Corner

I just returned from attending the two-day event of the 2nd Mountain West Seed Summit in Santa Fe.

If you are feeling down about the state of the planet, spend some time around seed savers. They will lift your spirits and give you hope for the Earth and humans.

Just as the seed holds the potential to rapidly adapt to climate change, seed savers are perpetual optimists.

The best way to have resilient gardens season after season is to save seed from your favorite and best performing varieties

You want to save, share, re-plant and select seeds again. This is how we create a local resilient seed system.

Diversity is key to the survival of all life forms on earth. This is a simple way to be part of the selection process and support biodiversity.

According to the National Gardening Association, 35% of all U.S. households grow food at home or in a community garden.

That adds up to **42 million people!**

Soon to come the Sandia Seed Steward program and re-visioning of the Sandoval Seed Library.

~ Lynda





2019 SCMG calendar

SCMG Board Meeting

3rd Tuesday, Monthly @ 10 am @ Health Commons,
Bldg.; B, 1500 Idalia Rd, Bernalillo, NM 87004

Tree Give Away

March 30th 11 am to 1 pm @ Loma Colorado Library

Earth Day City

Apr 20th @ 10:00 am – 12:00 pm @ Waterwise
Demonstration Garden

Cabezon Park Car Show

Apr 27 @ 10:00 am – 3:00 pm @ Cabezon Park

Desert Oasis Training Gardens, Plant Sale and Local Garden Fest

Apr 27th @ 10:00 am – 1:00 pm @ Albuquerque
Academy

4th Annual SCMG Plant Sale

April 29th @ 8:00 am – 11:00 am @ Corrales
Growers Market Opening Day

2019 MG Intern Class - End of Course Graduation and Celebration Party & Plant Sale

Apr 30th @ 12:30 pm – 5:00 pm @ St. Francis
Episcopal Church, Rio Rancho

Spring Garden Party

Late April or Early May – Date/Time and Place to
Be Announced

Butterfly Education and Awareness Day

Jun 1st @ 9:00 am – 2:00 pm @ Plant World

Annul Pork and Brew

Jun 28th, 29th, and 30th @ Santa Ann Star Center

Waterwise Demonstration Garden – Fourth of July

Jul 4 @ 10:00 am – 2:00 pm @ Waterwise Demonstration
Garden

Fall Harvest Party

Sep – Date/Time and Place to Be Announced

Placitas Garden Tour

Sep 8 @ 9:00 am – 4:00 pm

HOMEScape Solutions Design Workshop

Register by Sep 9th

<http://sandovalmastergardeners.org/homescape-solutions/>

First session: Fri, Sep 13th @ 6:30-9:30 PM

Members Annual Meeting

Sat Oct 28th @ 1:30 pm – 4:30 pm @ St. Francis Episcopal
Church, Rio Rancho

See the [SCMG online calendar](#) for further details about
the above events and volunteer opportunities. In addition,
the SCMG online calendar lists educational opportunities
for your continuing education.

<http://sandovalmastergardeners.org/news-and-information/events-calendar/>



Continuing Education Classes, 2019

March - April Schedule

FREE & OPEN to the public

DATE	TOPIC	DESCRIPTION	PRESENTER	TIME	LOCATION
Tues Mar 12	Plant Propagation	<p>This presentation will provide information on plant propagation in the following ways:</p> <ol style="list-style-type: none"> 1. From Seeds 2. Through Cloning & Grafting 3. By hybridization <p>Basic techniques will be explained and references for additional sources will be provided.</p>	Dave Pojman SCMG	7:00- 8:30 pm	Meadowlark Senior Center * <i>Gardening with the Masters</i>
Thurs Mar 28	Everything You Wanted to Know About Planning a Successful Vegetable Garden in Sandoval County	<p>Learn how to build a successful home garden! This presentation will discuss the following:</p> <ol style="list-style-type: none"> 1. Soil Preparation 2. Raised Beds and their advantages 3. Best Vegetable Varieties 4. Proper Watering, Fertilization, and Pest Control 	Loren Meinz SCMG	1:30- 3:00 pm	Meadowlark Senior Center * <i>4 Seasons Gardening</i>
Tues April 9	Gardening with Color	<p>Gardeners new to New Mexico often doggedly try to re-create their gardens from "back home" or wonder (sigh) if tan, red, or black gravel will be the only colors possible in their NM yards. Do not despair - from this presentation you will discover new techniques and plant selections that will add year round color to your garden.</p>	Kate Shadock SCMG	7:00- 8:30 pm	Meadowlark Senior Center * <i>Gardening with the Masters</i>

Thurs Apr 25	The Inner World of Plants	Develop stronger, healthier and, more productive plants with these science-based understandings. This quick look at the basics of botany and plant science will shine a light on the 'why' of plant care and will include how to spot and address plant disorders in your garden.	Dr. Curtis Smith <i>Retired NMSU Horticulture Specialist</i>	1:30- 3:00 pm	Meadowlark Senior Center * <i>4 Seasons Gardening Series</i>
-----------------	--------------------------------------	---	--	------------------	---

*Meadowlark Senior Center, 4330 Meadowlark Ln SE, Rio Rancho. Tel: (505) 891-5018

ADDITIONAL INTERESTING EVENTS

Coming Soon



4-Sandoval Livestock Sale

4-Quality Show Animals: Pigs, Lambs & Goats

4-Livestock Buyers

4-Consignors of State, Eastern, & numerous County Fair Champions

4-H Sponsored: Sandoval County 4-H Council

Saturday, April 13, 2019

View Livestock 9:00 a.m. - 11:00 a.m.

Sale begins at 11:00 a.m.

Santa Fe County Fairgrounds 3229 Rodeo Road

For more information or to become a consignor contact: Steve Lucero 505-867-2582 or smlucero@nmsu.edu



College of Agricultural, Consumer and Environmental Sciences

Vine to Bottle, Growing Grapes in New Mexico

At Botanic Garden Heritage Farm 2601 Central Ave NW Albuquerque NM, 87104

March 9: Pruning

While it is not essential to prune a grapevine for it to thrive... Pruning **IS** the one cultural activity that can vastly improve fruit production and quality year after year. Learn not only when and how to prune your grapevines, but why. Pruning/training of young and mature vines will be discussed. Several training and trellising schemes and configurations that ease and facilitate production will be presented. Proper tool selection and maintenance will be covered, and participants will have an opportunity to practice some "hands-on" pruning skills. Bring your own hand-pruners if you have them. All will be revealed.

April 13: Trellising & Training/ Canopy Management

Training a grapevine, the right way the first time is essential to prevent redundant and unnecessary work later in the life of your grapevines. This session will introduce principles and practices that provide the best chance of success. If you are the owner of a wayward or unruly grapevine... not to worry! We will discuss and demonstrate how to get those vines "back on track". Why, when and where to pull leaves, thin shoots and provide shade during the growing season in order to maximize fruit quality, whether for table, wine or juice grapes, will be presented.

May 11: Water Requirements & Irrigation

Water is essential to life... And to your grapevines! Learn how and when to efficiently water your vines. We will discuss the unique physiology of grapevines that allows them to thrive here in New Mexico. Different methods of irrigation will be presented with emphasis on drip irrigation. The effects of water quantity and quality on grapevines and plants in general will be discussed. You will learn how to assess your vines water status, in other words determine, 'how thirsty' are your vines at any given time during the year.

June 8: Grape Ripening

When is it time to pick? Sounds simple... It is, **IF** you know what you want from your grapes and what grapevine signs and cues to look for. The grape is a berry and has its own cycle of development over the course of the growing season. This cycle will be presented as well as how to determine grape maturity with simple in-field assessments will be demonstrated. The impact and measurement of sugar, acidity, color and pH will be demonstrated, as well as what you the grower can do in the vineyard to improve and enhance your juice, wine or table grape quality.

For more information contact:

ABQ BioPark

Pamela or JT at Phone: 505-768-2000



CALL FOR VOLUNTEERS!!

June 14 – 25 2019

Albuquerque is the host city for the 2019 **National Senior Games** presented by Humana.

Over 10,000 athletes, 50 years and older, from around the globe will be joined by over 20,000 visitors.

These athletes will participate in 20 sports as they compete for the GOLD!

Join the team of 3,500 volunteers for the world's largest sporting event for athletes ages 50 and over!

Sign up to volunteer at

[NSGA.com/volunteer](https://www.nsga.com/volunteer)

Volunteers needed for:

Hospitality

Scorekeeping

Venue Coordination

Athlete Registration

Awards, Etc.

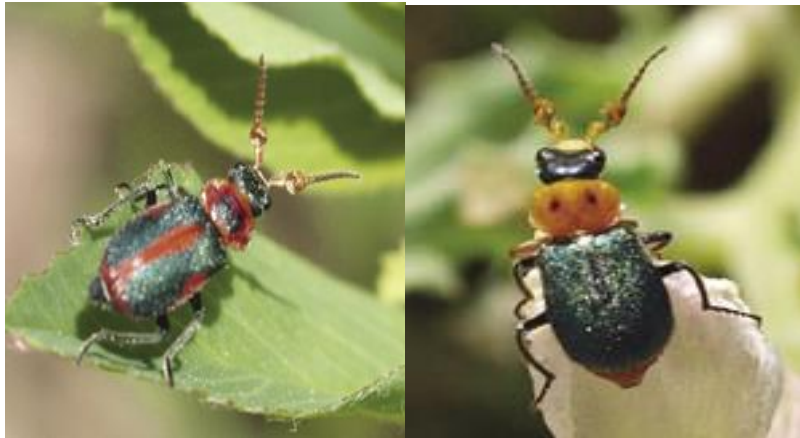


Each volunteer will receive a free t-shirt and admittance into the Volunteer hospitality area. Volunteers typically serve a minimum of four hours and will receive training.

Beneficial of the Month

Beetles (Order: Coleoptera) (iv) Soft-winged flower beetles (Family: Melyridae)

As their name suggests, these beetles are often found on flowers, although they are common and widespread in other habitats, including alfalfa fields. They are often brightly colored, sometimes with a metallic sheen. Some species have enlarged basal antennal segments. Both adults and larvae are predatory, with the latter usually being found in the soil, in leaf litter, or under bark.



Two species of soft-winged flower beetle.

Source: [Pocket Guide to the Beneficial Insects of New Mexico](#)

Southwest Plant of the Month

Hill country penstemon

Penstemon triflorus



General Information

Plant Form Flower

Plant Size 2' x 1'

Plant Type Perennial

Water Usage Low

Sunlight Sun, Partial Shade

Colors Red

Physical Description: Small bushy stature with multiple, short flowering stems just rising over the compact mass of dark green leaves, carrying a number of slightly fuzzy cherry-red, 2' long flowers.

Care and Maintenance: Remove spent stems to maintain compact bushy appearance.
Needs well draining soil.

Gardener's notes: This central Texas native is well adapted to El Paso's dry limestone soils. Another eastern Texas species, *P. tenuis*, requires considerably more moisture and richer soils but is sometimes available.

<https://desertblooms.nmsu.edu/plantadvisor/>